

## Practical Stuff

### ***Mattes (or Matt or Mat or Mount)***

A matte is the cardboard surround, with a backing board, used to display prints. These can be purchased from several sources –through the club (ask the secretary), from some photographic stores eg Hanafins, from picture framers (eg Alan Cherry, Aranui , ph981 6662), or you can buy a matte-cutter and learn to cut them yourself. Black mattes are most often used, although white can be good for monochrome prints.

### ***Prints and Printing***

Minimum and maximum print sizes are specified in the rule book, but 8 x 12 or 10 x 12 are the most usual sizes. You can print out your images at home if you have a high quality printer, or you can get your prints done at any commercial photographic printers. Remember that Mark Watson, at Photo Warehouse in Fitzgerald Ave, is a member of our club and gives a good price and high quality service to anyone wanting competition prints done.

### ***Digital images and resizing***

Digital images must be correctly resized to display properly through the projector – if they are too large or the wrong shape the projector will attempt (not very cleverly) to squash them down to size, with less than pretty results! Images must also be in JPEG format, and at 300dpi.

Most photo editing programs will allow you to resize your image, including even many of the basic programs which come bundled with a printer or with your computer. If you need some help, there are Club members who are happy to help you learn how to resize and present your images for competition - just ask the President or Secretary to introduce you to them.

**Remember** that when you email your images to the Competition Secretary they **MUST** be as *attachments* to your email, not *embedded* in your email. Some email programmes will automatically downsize and embed images unless you manually change their settings every time to stop this happening.



# Shutter Flutters

APRIL 2013

**New Brighton Photographic Club Inc.**



Emu - by Katrina O'Brien

MEETS TUESDAYS 7:30 PM

# PROGRAMME

## April

2nd Judging - SS Natural History  
9th Guest Speaker - Maree Turner  
16th Learning with Lester and Wendy  
24th Committee Meeting  
27th Field Trip to Ashburton Gardens

## May

7th Judging - 2nd Open - Peter Harper  
14th TBA  
21st AGM and Supper  
24-26 Field Trip - NBPC/Buller PC Lake Brunner  
29th Committee Meeting

### New Brighton Photographic Club

P O Box 18-546  
New Brighton  
Christchurch  
[www.newbrightonphotoclub.org.nz](http://www.newbrightonphotoclub.org.nz)

### Meets

1st, 2nd & 3rd Tuesday  
Of every month at 7:30pm  
Freemasons Centre  
18 Collingwood Street  
New Brighton

### Contacts

President Rondi Teisen ph. 3880689  
Secretary Jo Aldridge ph. 3888159  
Email [nbpc@xtra.co.nz](mailto:nbpc@xtra.co.nz)  
Shutter Flutters Jo Aldridge

### Committee Meets

4th Wednesday of the month

### New Members and Visitors

Very welcome

## Some Definitions

DPI = Digital Projected Image

dpi = dots per inch

SS = Set Subject

EOY = End of Year (usually meaning Competitions/Awards)

## 'End of Year' Awards

Any of your images that have won an award in a monthly competition during the preceding year can then be entered in an 'EOY' competition. Prints must be re-entered as prints, and digital images must be re-entered as digital images i.e. - as the same type of media that they won an award for during the year. You can select no more than 3 images per category to enter, from your successful images for that year. However, you can enter an image in a different suitable category (e.g. if you won an award with a landscape print in an 'Open' competition, you can enter it in either the 'Landscape Print' category or in the 'Open Print' category for EOY).

'EOY' categories for images that have gained any award in monthly competitions are – Open Print, Open DPI, Landscape Print, Landscape DPI, Natural History Print, Natural History DPI, Portrait Print, Portrait DPI, Photojournalism Print, and Photojournalism DPI. These images are then sent away for judging again, and the top placed image in each category is awarded 'Champion Image' for the year, and the next 2 or 3 best are awarded 'Honours Certificates'. All the grades are judged together for EOY competitions.

## Annual Competitions

As well as EOY awards there are several annual competitions held at the end of the year. These are for 'Field Trip', 'Black and White/ Monochrome' and 'C-grade Un-shown'. All of these have both DPI and Print categories. The 'Field Trip' and 'Black and White/ Monochrome' competitions are judged without any separation between the grades. Read the rule book for further details. The 'Highland Trophy' is a digital-image-only competition held during the year, and has it's own set of rules shown in the Rule Book.

## ***The Basics of Photo Club Competitions - Wendy Gibbs***

### ***How it works***

There are 8 monthly competitions held during the year.

Images from these competitions that win any awards are then eligible to be entered for the 'end of year' awards.

Monthly competitions alternate between 'Open' (any subject or type of image) and 'Set Subject' (a specific, selected theme or subject). In each monthly competition you can enter up to 3 images as 'digital projected images', and / or up to 3 images as 'prints'.

The images that you enter are then sent away to a judge (usually an approved or trainee PSNZ judge) who looks very closely at your image. At the 'Judging' meeting night they will give comments and feedback, and an award of either Honours/Gold, Accepted/Silver, or Highly Commended/Bronze, if the image is of high enough quality.

The comments you get from the judges are intended to be helpful, and are one good way of learning how to improve your photography. The comments will usually cover two aspects of your images -1 the technical quality ( proper focus, sharpness, correct exposure etc) and 2 the artistic merit (composition, lighting, subject interest etc).

Don't forget that you are getting one person's trained opinion, and while most judges will agree on technical matters, another judge may see the artistic merit of your image slightly differently. If you do not get an award for a particular image the first time you enter it, you can enter it in another competition later on.

In the monthly competitions images are judged within their grades, so if you are new to the club or to photography (C-Grade), don't worry that you will have to compete against experienced A-Grade members.

Remember to read the more detailed information on 'Competition By-laws' at the end of the 'Club Rules' booklet.

## **Guest Speaker - April**

## **Maree Turner**

Maree Turner is a qualified Master of Photography of the NZIPP.

She won her first gold award in 2001 with the PSNZ gaining the George Chance trophy - Champion colour print.

In that same year she gained PSNZ Associateship.

She has judged both the PSNZ National competition and the North Shore Salon.

Over her years in Auckland she has done numerous judging and guest speaks through the PSNZ clubs.

Maree began her photographic journey some 15 years ago and is the director and principal photographer of Maree T Photography. She predominantly photographs people, and specializes in Wedding and Portrait Photography for those clients that really want something special and creative where they become the canvas for their own art.

She moved down here just over a year ago and is loving Christchurch.

### **“ANYTHING BUT ORDINARY”**

*a photographer by trade, an artist by desire - Maree T Photography*

#### ***By Carolyn Collins***

Members were treated to an absorbing evening of photographic art as Maree described her journey after the birth of her children, from abstracts to Portraits, Monochromes, Weddings and Boudoir, Fine Art.

Presenting wedding couples with up to 800 images to make their choices from, means a lot of long hours, but more satisfied clients.

***She now uses Nik software which saves her hours of post processing.***

Don't take critique of your photos too personally as there is no right or wrong and every judge will have a different perception. Beauty is in the eye of the beholder and Maree never presumes to know what her clients will like so presents them with many variations of the same image and gives the final choice to them.

She enjoys finding interesting locations for the shoots and improvising when the weather is less than perfect.

Moving to Christchurch has allowed Maree to create a collection entitled “Christchurch Soul” encompassing “Fallen History”, “Windows to the Soul”, and “Raw Emotions of Survival”. She has written a blog about her move to Christchurch and her first experience of a 5.2 quake in the middle of the night.. She's also involved with the “Make a Wish Foundation” who grant wishes to terminally ill children and she feels very privileged to capture memories for their families. This has made her even more aware of the power and value of photography.

***Take family photos often, was her advice.***

## NBPC - NOMINATIONS FOR COMMITTEE 21 MAY 2013

POSITION	PERSON	NOMINATOR	SECONDER
PRESIDENT			
VICE PRESIDENT			
SECRETARY			
TREASURER			
COMMITTEE			
COMMITTEE			
COMMITTEE			
COMMITTEE			
COMMITTEE			
COMMITTEE			
COMMITTEE			
COMMITTEE			
4			

I found this table in one of my books, just goes to show how digital cameras have evolved in respect of megapixel size!

MEGAPIXELS	IMAGE DIMENSIONS	OUTPUT SUITABLE FOR
0.3	640 x 480	Web pages, email
0.5	800 x 600	Web pages, email
0.8	1024 x 768	Web pages, large emails, low-quality brochures, fridge photos
1.2	1280 x 960	6" x 4" prints (just), framed or in an album, small images for mid-quality publications
2.0	1600 x 1200	Good 6" x 4" prints, reasonable 6" x 8" prints, medium images for mid-quality publications
3.1	2048 x 1536	A4 prints, small pictures in magazines
4.3	2400 x 1800	A4 prints, 1/2 page picture in a magazine
6.0	2832 x 2128	A3 prints, full page magazine pictures
12.0	4256 x 2848	A1 prints. High-quality publications, professional photographic work, magazine and book covers, billboards.

Get the most from your digital camera - Rob Clarke, published 2003, Random House NZ.

## 2013 CLUB COMPETITION CLOSING DATES

12 FEBRUARY	1st Open
12 MARCH	SS1 - Natural History
9 APRIL	2nd Open
14 May	SS2 - Landscape
11 JUNE	3rd Open
9 JULY	SS3 - Inside Your House
30 JULY	22nd Photojournalism Competition entries
13 AUGUST	4th Open
10 SEPTEMBER	SS4 - Movement
17 SEPTEMBER	Highland Trophy entries
15 OCTOBER	Final Night Entries





Tiger Beetle



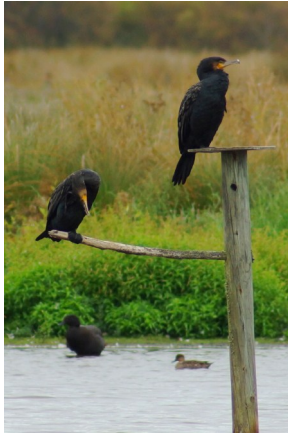
Fur Seal



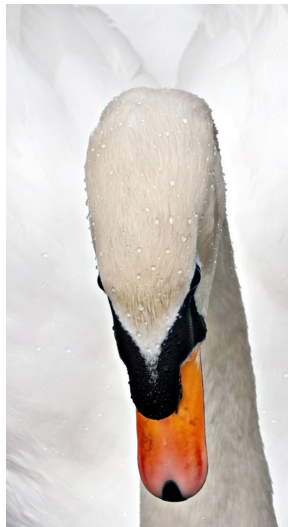
Robber Fly



Porpoise Bay Heads



Shags #2



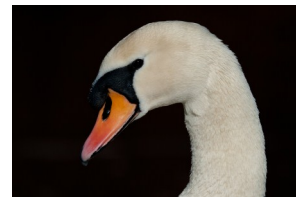
Swan



Tussock Butterfly



Shags Resting



White Swan



Hunting Spider

# **NOTICE OF THE NEW BRIGHTON PHOTOGRAPHIC CLUB**

## **2013 AGM**

**7.30 PM TUESDAY MAY 21st**

**AT THE FREEMASON  
CENTRE  
COLLINGWOOD STREET  
NEW BRIGHTON**

**FOLLOWED BY OUR GUEST SPEAKER  
AND SUPPER**

**BRING A PLATE**

**COMPETITION RESULTS: SS - Natural History JUDGE: Julia Home**

**PROJECTED IMAGES**

**Gold**

Emu  
Lucilia sericata  
White Swan

Karina O'Brien  
Marilyn Kidd  
Peter Warren

**Silver**

Pied Stilt #1  
Shags #2  
Black Swan Cygnet  
Hunting Spider  
Tiger Beetle  
Fur Seal  
Shag Resting  
Robber Fly

Guy Wright  
Guy Wright  
Wendy Gibbs  
Owen Tutty  
Owen Tutty  
Rondi Teisen  
Rondi Teisen  
Geoff Tutty

**Bronze**

Bumble Bee  
Duck #1  
Fern  
Black Swan Adult  
Male Paradise Shelduck  
Mating Fruit Flies (Urophora affinus)  
Tussock Butterfly  
Bengal Tiger  
Porpoise Bay Heads  
Swan

Darryn Stephenson  
Guy Wright  
Phyllis Seymour  
Wendy Gibbs  
Carolyn Collins  
Doris Tutty  
Doris Tutty  
Peter Warren  
Mark Watson  
Rondi Teisen

**PRINTS**

**Gold**

Arctophlinae  
Phalacrocorax carbo

Tracey Kidd  
Mark Watson

**Silver**

Spider Webb  
Black Swan  
Paradise Shelduck Young  
Laminarales  
Maoricicada nigra  
Wave

Les Griffiths  
Carolyn Collins  
Tracey Kidd  
Geoff Tutty  
Tracy Kidd

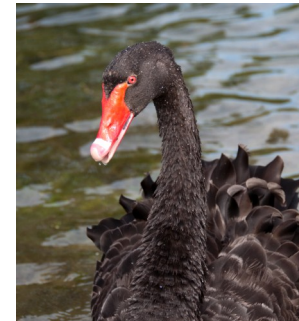
**Bronze**

Chroicepnaeus scopulinus  
Manuka

Marilyn Kidd  
Rondi Teisen



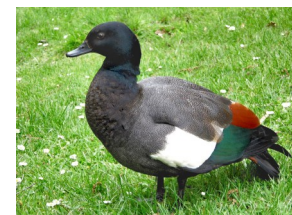
Bumble Bee



Black Swan Adult



Black Swan Cygnet



Male Paradise Shelduck



Fern



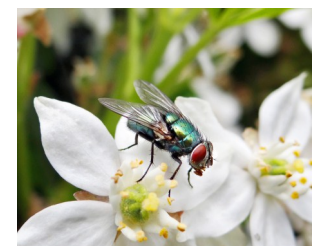
Pied Stilt #1



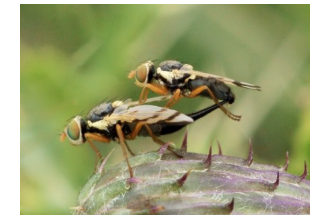
Ducks #1



Bengal Tiger



Lucilia sericata



Mating Fruit Flies  
(Urophora affinus)