

SEPTEMBER

Tue	3	Judging 4th Open
Tue	10	Quiz night Entries SS4 "Made in Stone"
Tue	17	PJ showing
Tue	24	Committee

OCTOBER

Tue	1	Judging Set Subject 4
Tue	8	Final night entries 6 on a board A grade final entries
Tue	15	AV night
Tue	22	Committee
Tue	29	Spare night

NOVEMBER

Tue	5	AGM and Speaker
Tue	12	Talk or tutorial
Tue	19	Committee
Tue	26	Certificate night Showing A plus

DECEMBER

Tue	3	Final night
Sun	7	Final committee meeting

Subscription Rates

Please note early payment discount

	Up to 31/03/19 ("Early Bird discount")	From 01/04/19
Individual	\$50	\$60
Family	\$90	\$100
Associate	\$30	\$35
Out of Town	\$40	\$45
Junior	\$30	\$35

OTHER COMPETITIONS 2019

Individual

PSNZ Canon online	(O,D)	25th of each even month	
NATEX	(O & N/H, D & P)		TBA
PSNZ Honors	(O & N/H, D & P)		TBA
Laurie Thomas	(L/S, D)		April
North Shore Salon	(various, D & P)		TBA
Creative Photography	Pukekohe Club		June
Photojournalism	(PJ & Street, D)		July
Triptych	(O, D & P)		August
Southern Regional	(O & N/H, D & P)		TBA
Jack Sprosen	(AV, D)		October
Dunedin Festival	(O & N/H, D & P)		October

Interclub

Bledisloe	(Open, Prints)		February
Wilshire	(Open, Digital)		February
Bowron	(L/S, Digital)		July
George Chance	(L/S, Print)		July
National Convention	(O,D & P)		TBA

PROPOSED FIELD TRIPS

Sunday 7 April	Car Rally
Sunday 5 May	Autumn Colours
Sunday 30 June	Midwinter Brunch
Sunday 7 July	City Walk
Sunday 18 August	New Brighton Pier
Sunday 8 September	Daffodils
Sunday 13 October	Orton Bradly Park

Club meets 1st, 2nd, and 3rd Tuesday of each month
and occasionally a fifth Tuesday 7:30pm
Ascot Community Centre 12 Ascot Avenue
North New Brighton

Contact: Guy 03 980 1767

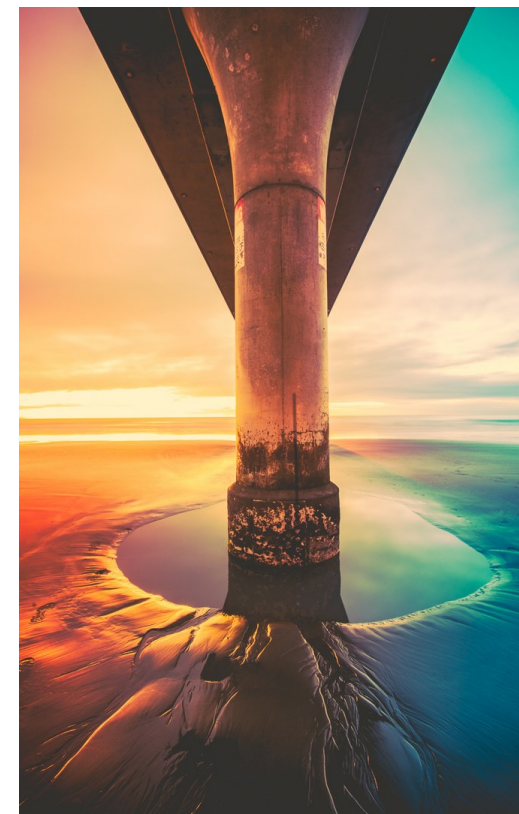
www.newbrightonphotoclub.org.nz

Email: nbpc.photo@gmail.com

Casual visitors and guests are welcome

**Please note that this programme is not set in
concrete and could change as required**

PROGRAMME 2019



**NEW BRIGHTON
PHOTOGRAPHIC CLUB**
www.newbrightonphotoclub.org.nz

**Ascot Community Centre
12 Ascot Avenue
P O Box 18-546
New Brighton**



CLUB COMPETITIONS ENTRY DATES

Image Size of entries is 1620 wide by 1080 high.

Tues February 12 Comp 1	1st Open
Tues March 12 Comp 2	Set Subject Abstract architecture
Tues April 9 Comp 3	2nd Open
Tues May 14 Comp 4	Set Subject Mirroring
Tues June 11 Comp 5	3rd Open
Tues July 9 Comp 6	Set Subject Food photography
Tues July 30	Entries PJ
Tues August 13 Comp 7	4th Open
Tues September 10 Comp 8	Set Subject Made of stone
Mon September 30	Highland trophy entries
Tues October 8	Final night entries 6 on a board entries A Grade final entries

2019 Programme

JANUARY

Tues	29	Committee
-------------	----	-----------

FEBRUARY

Tue	5	1st Night BBQ passing 2018 financials
Tue	12	Instruction night Rules & competition entry details
Tue	19	Club judging
Tue	26	Committee

MARCH

Tue	5	Judging 1st Open
Tue	12	Talk Abstract architecture
Tue	19	Inhouse judging
Tue	26	Committee

APRIL

Tue	2	Judging set subject 1
Tue	9	Jo'burg AV Entries 2nd Open
Tue	16	Nathan Pettigrew speaker on Marine creatures
Tue	23	No meeting
Tue	30	Committee

MAY

Tue	7	Judging 2nd Open
Tue	14	John Miller OshKosh Talk Entries set subject 2
Tue	21	Inhouse judging
Tue	28	Committee

JUNE

Tue	4	Judging SS2
Tue	11	Talk or tutorial Entries 3rd Open
Tue	18	Inhouse judging
Tue	25	Committee

JULY

Tue	2	Judging 3rd Open
Tue	9	Workshop Luminar Entries SS3 Food
Tue	16	Inhouse judging
Tue	23	Committee
Tue	30	Spare night

AUGUST

Tue	6	Judging SS3
Tue	13	Talk Mark Watson Entries 4th Open
Tue	20	Inhouse judging
Tue	27	Committee